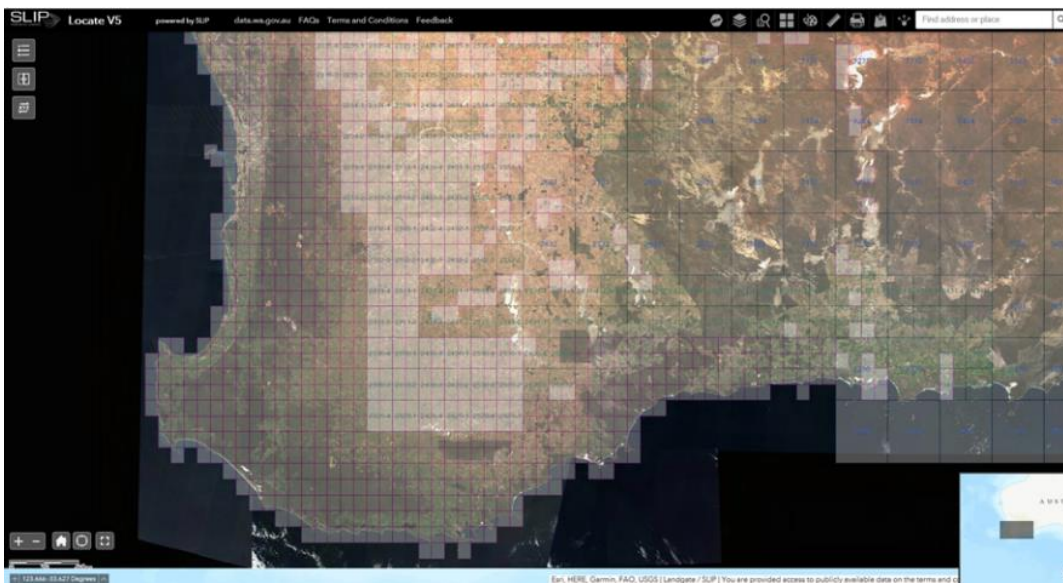
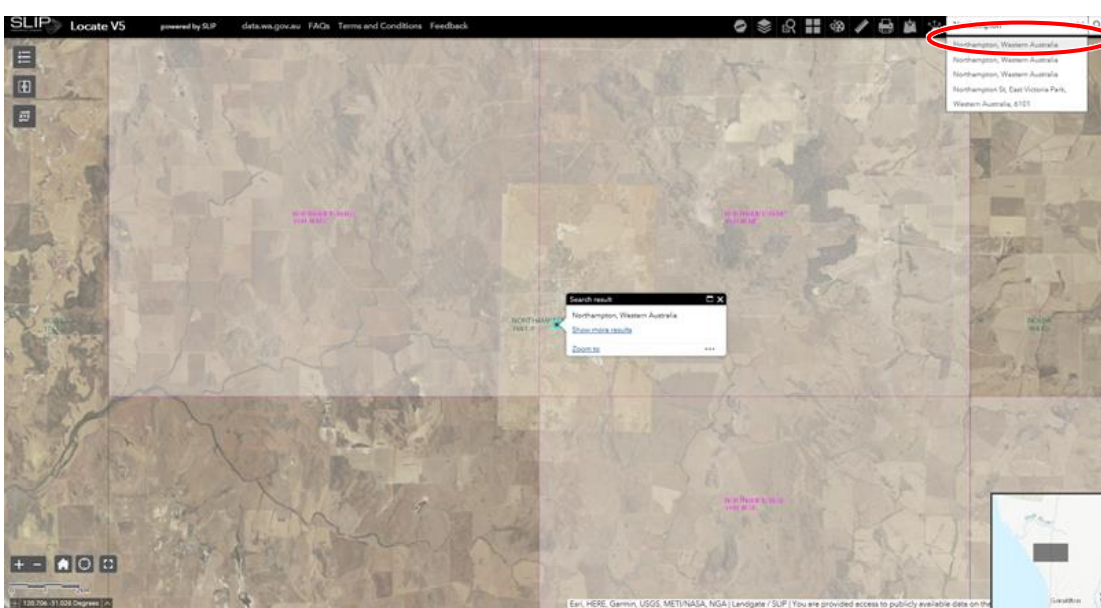


Identify your topographic map sheet name and number using Locate

1. Open Locate using this [link](#).

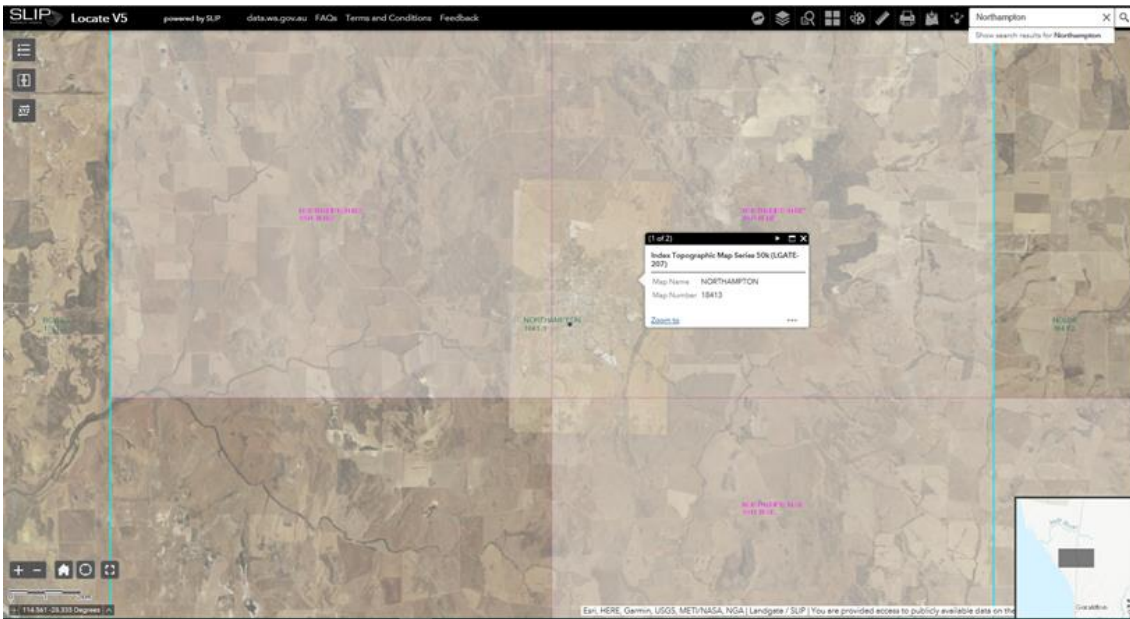


2. Search for the address or area of interest using the search bar.

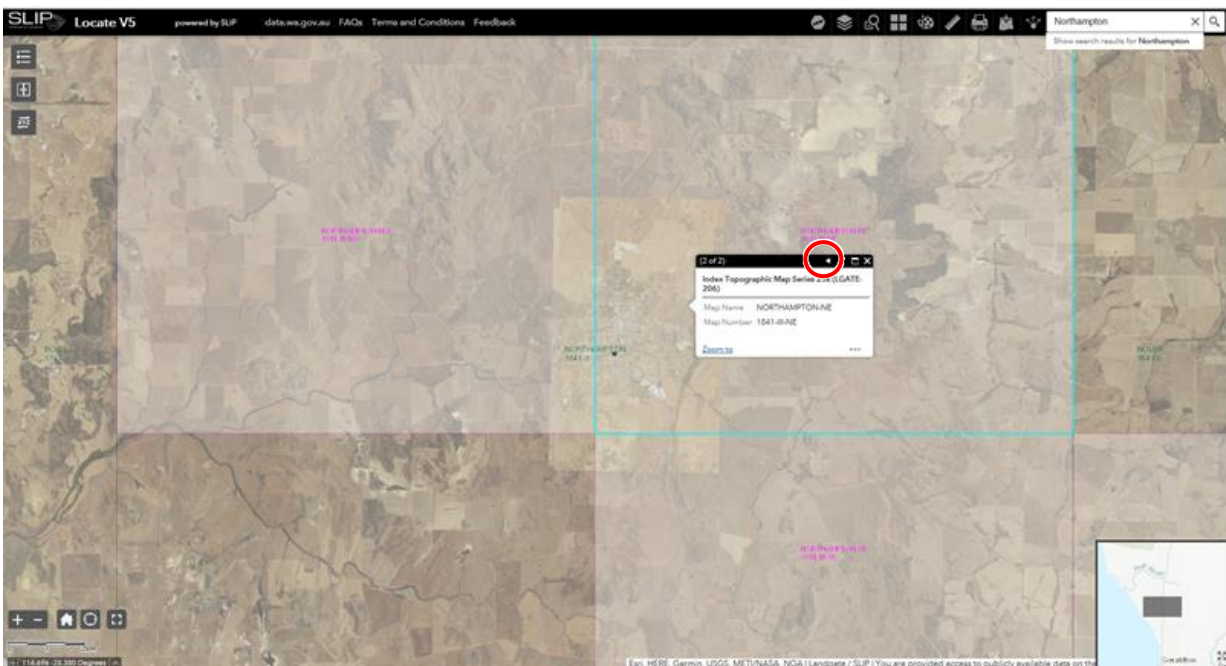


3. Click on the highlighted area of interest and a pop-up will appear displaying the map name, number and scale/s available.

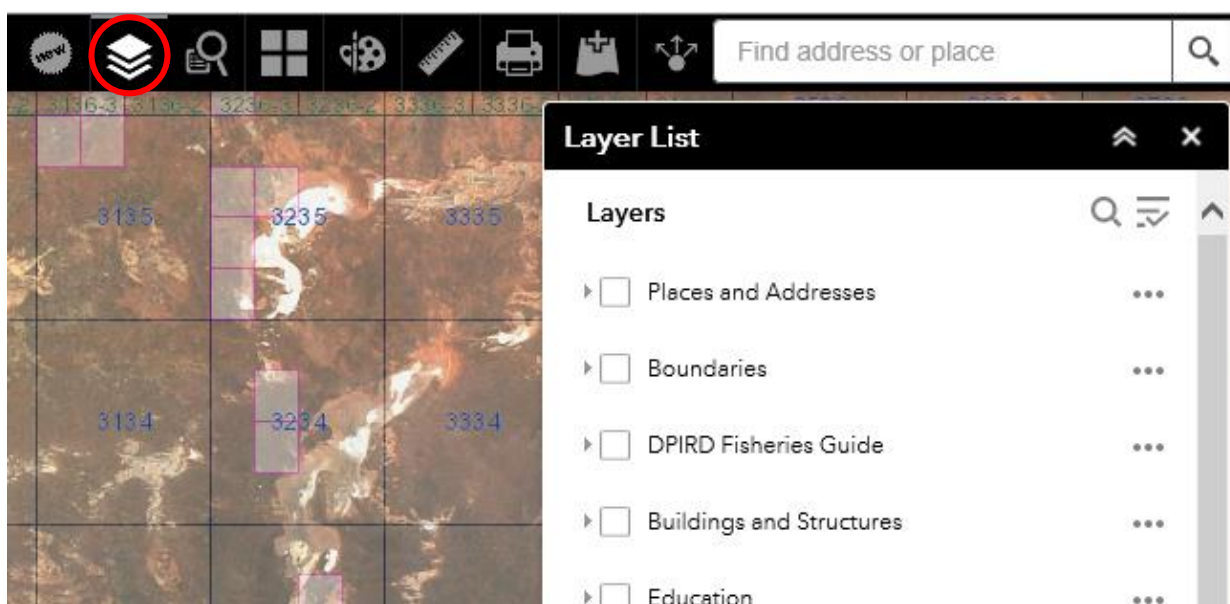
Topographic map scales will vary depending on your location - 1:25000 (25k), 1:50000 (50k) or 1:100000 (100k).



4. Click on the arrow in the pop-up box to display all available scales.



5. Use the Layer List in Locate to toggle on additional features to assist with your search.



6. Note the name and number of your area of interest for the completion of your application form.